


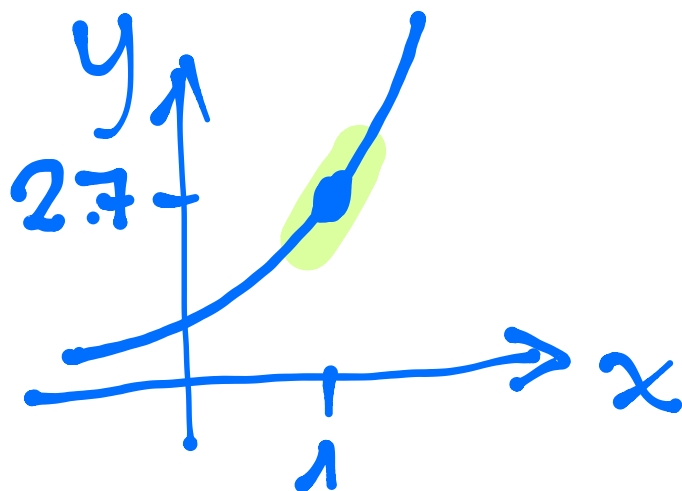
$$P(1, 2.72)$$
$$Q(1.1, ?)$$


$$y = e^x$$

$$D[e^x] \rightarrow e^x$$

calcolo la derivata nel punto x_0

$$x=1 \rightarrow e^1 = 2.72$$



$$m = \frac{y - y_0}{x - x_0}$$

$$2.72 = \frac{y - 2.72}{x - 1}$$

$$2.72(x - 1) = y - 2.72$$

$$2.72 + 2.72(x - 1) = y$$

$$y = 2.72x - 2.72 + 2.72$$

calcolo nel punto Q la retta, ottengo
soluzione approssimata

$$y = 2.72 \cdot 1.1$$

$$y \approx 3$$